



THE HOME COMPANY

A HUBBELL AFFILIATE



CHOICES

We offer a variety of flexible floor plans and top-quality features at a price point you'll love.

QUALITY

Our dedication to quality can be seen in our superior craftsmanship as we strive to be the best home builder in Omaha.

SIMPLE

Our homebuilding and customer service processes are straightforward and dedicated to you.

ENERGY-EFFICIENT

Trust The Home Company to build your energy-efficient home and enjoy peace of mind knowing that we have some of the lowest Home Energy Rating Service (HERS) scores in Omaha's history.

GLENVIEW

9719 Giles Road | La Vista, NE 68128
402.884.4854 | thehomecompanyomaha.com



GLENNVIEW

1,879 SQ FT

3 BEDROOMS | 2 BATHROOMS

AWESOME INCLUDED FEATURES

Some of the Lowest HERS Ratings in Omaha's History

R50 Attic Insulation

James Hardie Siding and Trim

Vulkem Commercial Grade Caulking

Designer Preferred Sherwin Williams Paint

Engineered Floor, Roof Trusses, and Wall Panels

Hand-scraped Hardwood Floors in Kitchen and Entry

Large Picture Windows

Gas Fireplace with Custom Design Choices

Quartz Kitchen Countertops

Birch Cabinetry

Kitchen Tile Backsplash

Stainless Steel Appliances

Hidden Kitchen Pantry (per plan)

Your Choice of Electric or Gas Range

Quartz Bathroom Countertops

Tiled Owner's Bath Shower Walls

Drop Zone with Several Layout Choices

Black Metal Spindles on Staircase (per plan)

6 lb. Carpet Pad

VISIT OUR MODEL HOMES

SATURDAY AND SUNDAY FROM 1-5 PM

THE EDISON

7304 North 168th Avenue | Bennington, NE 68007

THE SANTA CLARA

7850 South 193rd Street | Gretna, NE 68028

THE ELLISON

11805 S 110th Avenue | Papillion, NE 68046

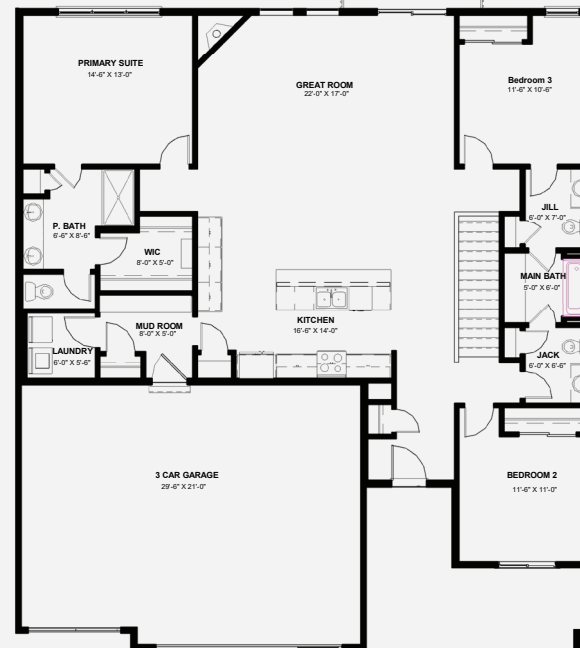
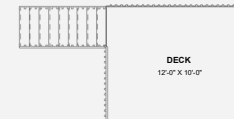
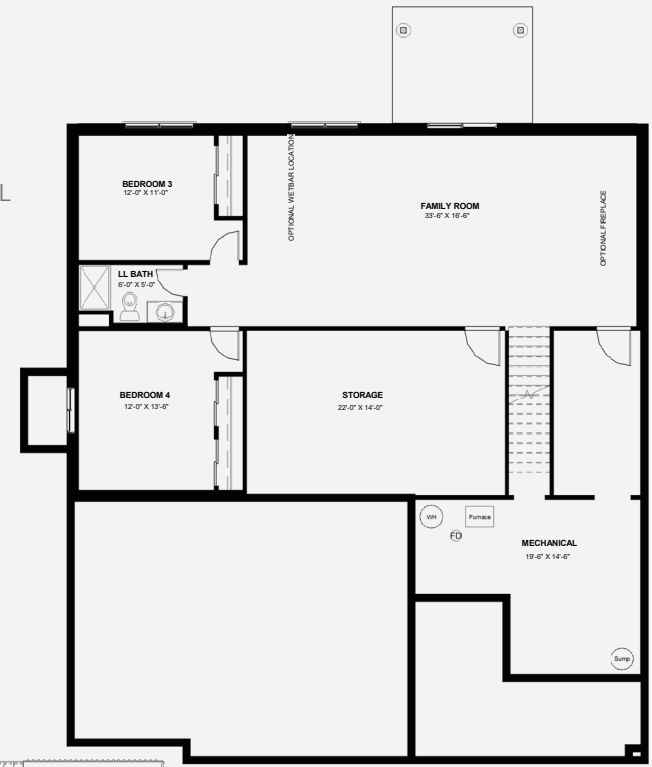
SATURDAY AND SUNDAY FROM 1-3 PM

THE REILLY - TOWNHOMES AT GALLERY 23

2264 Aaron Way | Fremont, NE 68025

Artist rendering may vary from plan. prices, elevations, and floor plans may be subject to change, see sales associate for details. 03/2022

MAIN LEVEL



OPTIONAL LOWER LEVEL FINISH