



ELEVATION A



ELEVATION B



ELEVATION C



## CHOICES

We offer a variety of flexible floor plans and top-quality features at a price point you'll love.

## QUALITY

Our dedication to quality can be seen in our superior craftsmanship as we strive to be the best home builder in Omaha.

## SIMPLE

Our homebuilding and customer service processes are straightforward and dedicated to you.

## ENERGY-EFFICIENT

Trust The Home Company to build your energy-efficient home and enjoy peace of mind knowing that we have some of the lowest Home Energy Rating Service (HERS) scores in Omaha's history.



# CRAWFORD

2-STORY HOME 1,917 SQ FT  
3 BEDROOMS | 2.5 BATHROOMS  
FINISHED BASEMENT OPTIONS

## AWESOME INCLUDED FEATURES

- Some of the Lowest HERS Ratings in Omaha's History
- R50 Attic Insulation
- James Hardie Siding and Trim
- Designer Preferred Sherwin Williams Paint
- Engineered Floor, Roof Trusses, and Wall Panels
- Large Family Room Windows
- Laminate Kitchen Countertops
- Birch Cabinetry
- Stainless Steel Appliances
- Stainless Steel Electric Range
- Laminate Bathroom Countertops
- Dual Vanity in Owner's Bath
- Walk-in Closets (per plan)
- Second Story Laundry
- 6 lb. Carpet Pad
- Front Porch
- Attached Two Car Garage

## AVAILABLE UPGRADES

- Quartz Countertops
- Fireplace
- Finished Basement
- 3rd Car Garage

## VISIT OUR MODEL HOMES SATURDAY AND SUNDAY FROM 1-5 PM

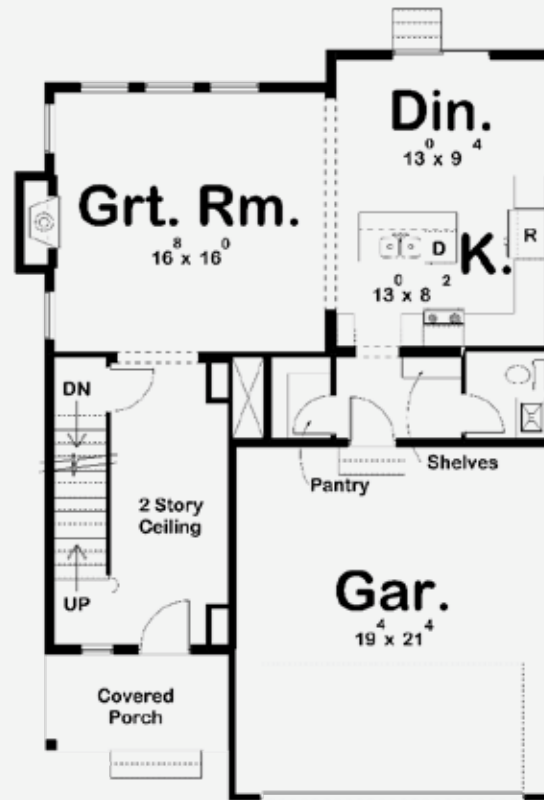
THE EDISON  
7304 North 168th Avenue | Bennington, NE 68007

THE SANTA CLARA  
8205 S 196th Street | Gretna, NE 68028

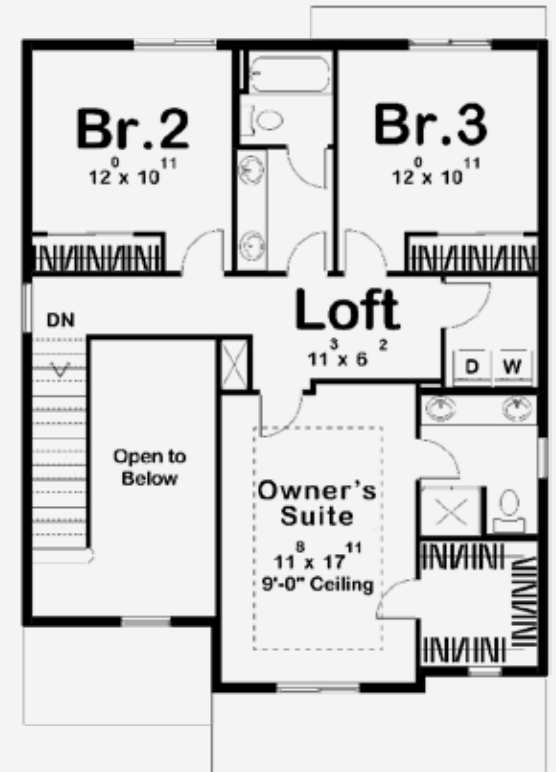
THE ELLISON  
11805 S 110th Avenue | Papillion, NE 68046

## SATURDAY AND SUNDAY FROM 1-3 PM

THE REILLY - TOWNHOMES AT GALLERY 23  
2264 Aaron Way | Fremont, NE 68025



MAIN LEVEL



SECOND LEVEL